

Learning Visits Information Pack



NEW LANARK
World Heritage Site



Introduction:

This pack provides all the information you may need to plan a learning visit to New Lanark World Heritage Site, including the sessions we offer, links to the curriculum, costs and booking information.

New Lanark is a former 18th century cotton spinning mill village located on the banks of the Falls of Clyde. We are recognised as one of Scotland's 7 UNESCO World Heritage Sites and welcome over 40,000 visitors annually to our site. New Lanark has a resident village community of 65 households, set within a National Nature Reserve. In the village we have an award-winning Visitor Centre, as well as the New Lanark Mill Hotel, Mill Shop and Café.

Our learning programme aims to provide an exciting and engaging experience for learners outside the classroom. Our sessions are designed to support the Curriculum for Excellence and are delivered by our excellent team of guides and facilitators.

We look forward to seeing you at New Lanark soon!

Contents:



Why learn at New Lanark?	p.2
Sessions by Level	p.3-5
Early Years and Lower Primary	
Primary Level	
Secondary Level	
Higher Education and General Interest Groups	
Costs and Booking	p.6
Group Sizes and Ratios.....	p.7
Preparing for Your Visit.....	p.8
Travelling to New Lanark	p.9
Parking	
School Travel Subsidy	
Site Facilities	p.10
Pre-Booked Lunch Menu	p.11
Site Map	p.12
Contact Details.....	p.13

Why learn at New Lanark?

Context for Learning

Learning on a historical site provides a unique environment in which to consolidate knowledge from the classroom by gaining direct experience of what life was like in the past and exploring the places where history happened.

Cross-Curricular Learning

The unique nature of our site combines social and political history, STEM topics, and expressive arts. Our programme aims to provide an in-depth cross curricular approach which can be tailored to the needs of visiting groups.

Active Learning

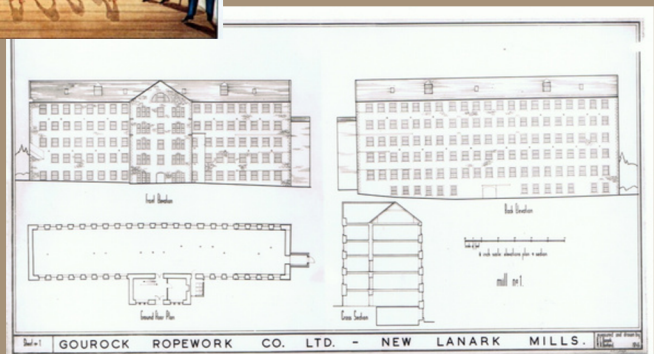
All our sessions are designed to be interactive and engaging for pupils, allowing them to gain hands-on experience of history, which allows pupils of every level the opportunities to engage and be inspired.

Critical Thinking Skills

Our learning environment encourages children to be curious and ask questions, prompting them to think critically about life in the past and how history relates to our lives today.

Culture and Heritage

Visiting a historic site is hugely valuable for school age children, it helps encourage a sense of ownership and pride in their area or country's history and raises awareness of issues such as conservation and preservation of historical sites.



Sessions by Level

Early Years and Lower Primary

Mini Mills Tour

An abridged version of our guided tours, designed to provide maximum engagement for our youngest visitors. Groups will visit the impressive waterwheel, see the incredible textile floor, and explore the beautiful roof garden.

Level: Early Years - P2

Length: 45 mins

Curriculum Links: SOC 1-02a

Toys from the Past

A hands-on session exploring how children played in the past. Children will get the chance to handle our replica toys and explore how they work, the materials they're made of, and how they compare to their own modern day toys.

Level: P1-3.

Length: 1 hour

Curriculum Links: SOC 0-04a, SOC 1-04a



Primary Level

Discovery Tours

Our Primary level tours can be adjusted to suit your relevant area of study on request. These tours will explore the key areas of the site and provide an engaging and thought-provoking experience for learners, with frequent questions which involve learners in the tour and engage them with the historical space.

Level: P3-7.

Length: 1 hour

Curriculum Links: SOC 1-03a SOC, 1-04a, SOC 1-06a, SOC 2-03a, SOC 2-04a, SOC 2-06a

Topics:

- The Story of New Lanark
- Victorians and Industry
- Power Trail (Hydro Power and STEM)

Historic Classroom

Led by a costumed facilitator, our immersive classroom sessions allow learners to experience what the school day was like in the 1820s. This session takes place in our reconstructed historic classroom where learners write with authentic slates, try out a marching drill, and compare their experience to modern day schooling.

Level: P3-7

Length: 1 hour

Curriculum Links: SOC 1-04a, SOC 2-04a



Secondary Level

Guided Tours

Secondary level guided tours can be provided on a selection of topics. Learners will visit the key areas of the site and be encouraged to think critically about the interpretation of history and how social issues impacted those in the past.

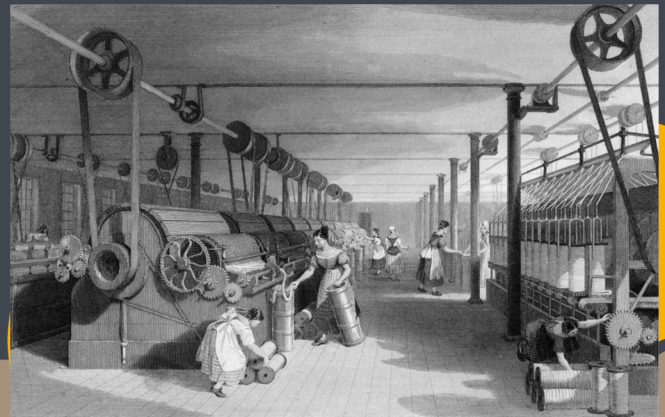
Level: S1-5

Length: 60-90 minutes depending on content.

Curriculum Links: SOC 3-05a, SOC 3-06a, SOC 4-05a ,SOC 4-05b

Topics:

- The Story of New Lanark
- Victorians and Industry
- Power Trail (Hydro Power and STEM)
- Changing Britain 1760 - 1914



Higher Education and General Interest Groups

Guided Tours

Tours can be adapted to suit the area of study or interest and are led by our expert guides. Please refer to the topic list below for an idea of available subjects. If your topic is not mentioned, please get in touch with us, as we may be able to accommodate special subjects on request.

Length: 60-90 minutes

Topics:

- Story of New Lanark
- Victorians and Industry
- Power Trail
- Heritage and Conservation
- Behind the Scenes Textile Tour



Costs and Booking

Prices for UK Schools only (wider pricing available on request)

Activity	Price per adult	Price per child
Visitor Attraction Admission Only	£8.00	£7.00
Single Activity (including Visitor Attraction Admission)	£9.00	£8.00
Double Activity (including Visitor Attraction Admission)	£10.00	£9.00

*Small groups: for groups of 20 people or less, there is a surcharge of £50.00 for a Guided Tour or Learning Activity

How to book:

Please visit the Learning section of our website and submit an enquiry form. A member of staff will get back in touch to help you complete your booking. You can also contact the team if you have additional questions at heritage@newlanark.org

Book your Learning Visit

Our team are on hand to help you plan and book your visit!

You can view prices for learning visits as well as other useful information below. If you have any questions, or are ready to book your visit, please contact our Heritage Team via our Online Contact Form, or by email to Heritage@newlanark.org. A member of the team will then get back to you.

[ENQUIRE NOW](#)

Group Sizes and Ratios

We aim to provide the best possible experience for our visiting groups. Appropriate group sizes ensure all learners have the best experience possible.

We recommend the following group sizes for all facilitated sessions:

Early Years	20 learners per session
Primary Level	30 learners per session
Secondary Level	30 learners per session
Higher Education and Other	40 learners per session

Many groups will have their own required adult to child ratios. Please note it is the responsibility of the group leader to ensure they have the appropriate number of adults. New Lanark Trust will not enforce ratios but recommend the below for all visiting learning groups (as per NSPCC Guidance) :

Under 2 years	1 adult : 3 children
2 - 3 years	1 adult : 4 children
4 - 8 years	1 adult : 6 children
9 - 12 years	1 adult : 8 children
13 - 18 years	1 adult : 10 children

*Learning Visit Risk Assessment can be provided after booking if required.

Preparing for your visit

Accessibility

The majority of the site is accessible but some areas can be uneven underfoot e.g. areas of cobblestones. If you require accessibility assistance on the day of your visit, please let a member of staff know. We request all access requirements from school groups in advance.

Our school lunch room is adjacent to an accessible bathroom with baby-changing facilities. This is located on the basement floor of Robert Owen's School for Children.

What to bring with you:

New Lanark is a large site which involves going outside to access different areas of the Visitor Attraction. Please ensure you come prepared with sensible footwear, and a rain jacket if needed.

If you are joining us for a Guided Tour, portions of this tour will take place outside.



Travelling to New Lanark

Parking

The main car park is located at the top of the hill, outside the village itself. Parking is charged at £3 per car and £5 per coach for a 24 hour period.

Blue Badge parking is available outside the Visitor Attraction Reception. Minibuses can park in these spaces but the car park cannot accommodate vehicles any larger than this.



For directions to New Lanark, please see our website: [Getting to New Lanark](#).

Coaches are welcome to drop off and pick up in the village but must ultimately park in the top car park.

Please be aware that New Lanark is a place of residence as well as a visitor attraction and residents **must** have access to their properties.

Coach drivers are welcome to make use of the cafe and other facilities on site for refreshment.

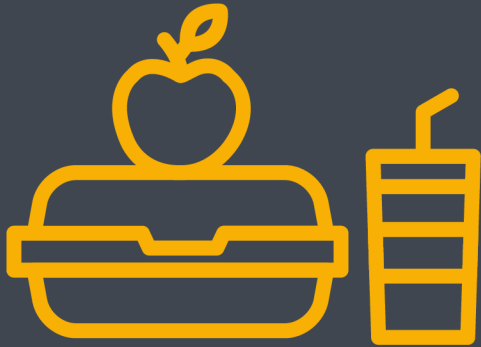
Schools Travel Subsidy

As New Lanark is a site of national importance, Scottish schools are able to apply for the Scottish Government Travel Subsidy to help support travel costs. The Scottish Government Heritage Travel Subsidy for Schools covers 75% of transport costs (up to a maximum of £300) to visit the chosen site. Scotland's special schools and units can apply for 100% of travel costs (up to a maximum of £300).

For further information and details about how to apply, please see the [Historic Environment Scotland website](#).

Site Facilities

Packed Lunch Facilities



Lunch rooms are available for groups to eat packed lunches but must be pre-booked and are subject to availability.

Please inform us at the stage of booking if you would like to use a lunch room.

Cafe

The cafe can cater for pre-booked group lunches. Dietary requirements are required in advance. Please see page 11 for the full menu offer and booking details.



Gift Shop

Groups are encouraged to visit the gift shop during their visit. We stock a range of high quality gifts and souvenirs.

Children must be supervised while inside the gift shop and we recommend school groups split into smaller groups of no more than ten pupils to browse.



Pre-Booked Lunch Menu

Option 1 - £10 per person

Selection of Sandwiches
Homemade Scone, Butter & Jam
Tea & Coffee

Option 2 - £13 per person

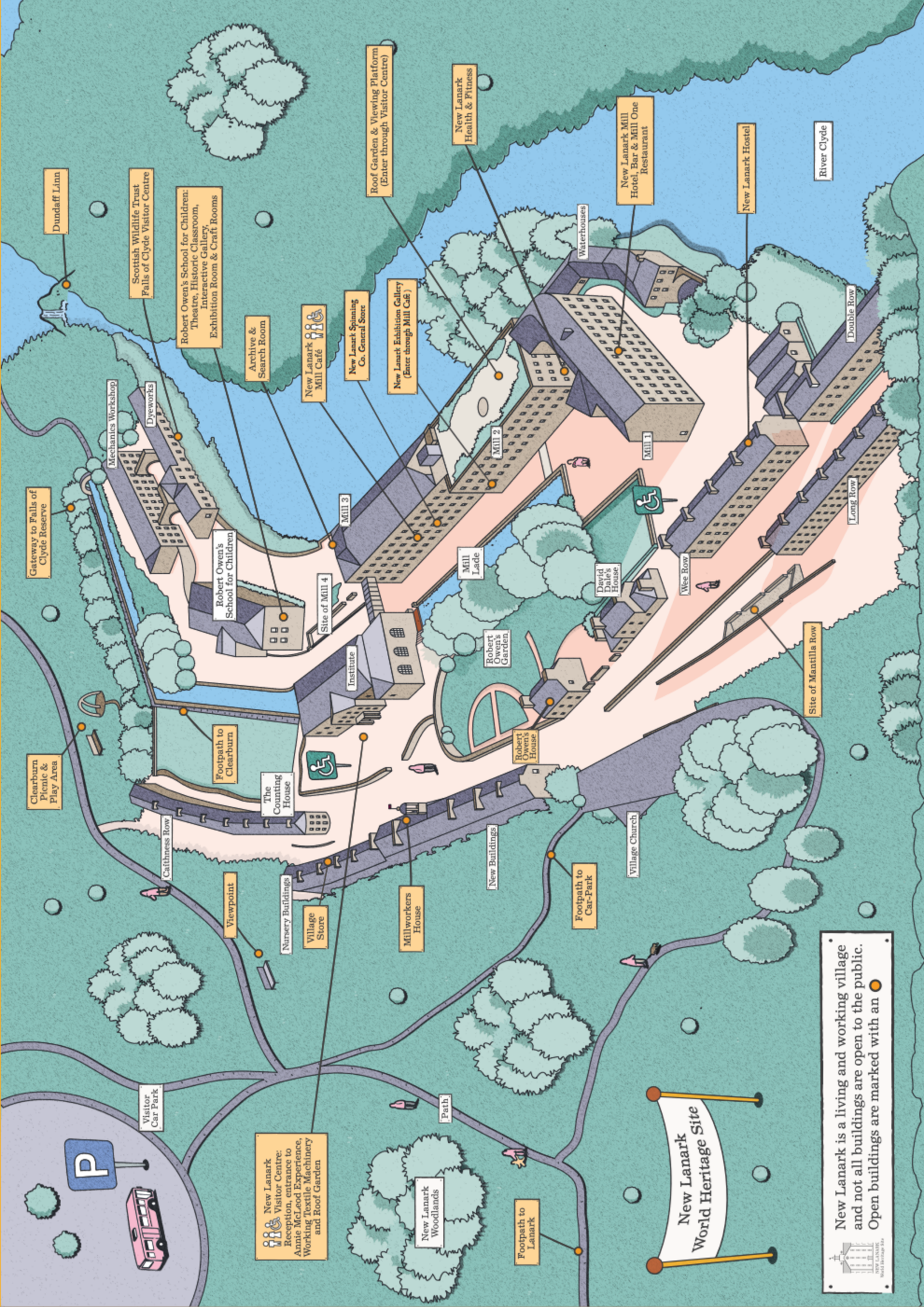
Homemade Soup of the Day
Selection of Sandwiches
Tea & Coffee

Option 3 - £16 per person

Homemade Soup of the Day
Selection of Sandwiches
Homemade Scone, Butter & Jam
Tea & Coffee

To book, please contact trust@newlanark.org with the following information:

- Lunch option of choice
- Number of people dining
- Any allergies or dietary requirements
- Date and time for booking



New Lanark
 Visitor Centre:
 Reception, entrance to
 Annie McLeod Experience,
 Working Textile Machinery
 and Roof Garden

New Lanark is a living and working village
 and not all buildings are open to the public.
 Open buildings are marked with an ●



New Lanark
 World Heritage Site

Dundaff Linn

Scottish Wildlife Trust
 Falls of Clyde Visitor Centre

Robert Owen's School for Children:
 Theatre, Historic Classroom,
 Interactive Gallery,
 Exhibition Room & Craft Rooms

Archive &
 Search Room

New Lanark
 Mill Café

New Lanark Spinning
 Co. General Store

New Lanark Exhibition Gallery
 (Enter through Mill Café)

New Lanark
 Health & Fitness

New Lanark Mill
 Hotel, Bar & Mill One
 Restaurant

New Lanark Hostel

River Clyde

Double Row

Long Row

Site of Mantilla Row

Village Church

Footpath to
 Car-Park

New Buildings

Millworkers
 House

Village
 Store

Nursery Buildings

Visitor
 Car Park

P

Path

New Lanark
 Woodlands

Footpath to
 Lanark

Gateway to Falls of
 Clyde Reserve

Clearburn
 Picnic &
 Play Area

Mechanics Workshop

Dyeworks

Robert Owen's
 School for Children

Mill 3

Site of Mill 4

Institute

Footpath to
 Clearburn

The
 Counting
 House

Catfiness Row

Viewpoint

Mill Lade

Robert
 Owen's
 Garden

David
 Dale's
 House

Wee Row

Waterhouses

Mill 1

Mill 2

Double Row

Long Row

Site of Mantilla Row

Village Church

Footpath to
 Car-Park

New Buildings

Millworkers
 House

Village
 Store

Nursery Buildings

Visitor
 Car Park

P

Path

New Lanark
 Woodlands

Footpath to
 Lanark

Gateway to Falls of
 Clyde Reserve

Clearburn
 Picnic &
 Play Area

Mechanics Workshop

Dyeworks

Robert Owen's
 School for Children

Mill 3

Site of Mill 4

Institute

Footpath to
 Clearburn

The
 Counting
 House

Catfiness Row

Viewpoint

Mill Lade

Robert
 Owen's
 Garden

David
 Dale's
 House

Wee Row

Waterhouses

Mill 1

Mill 2

Double Row

Long Row

Site of Mantilla Row

Village Church

Footpath to
 Car-Park

New Buildings

Millworkers
 House

Village
 Store

Nursery Buildings

Visitor
 Car Park

P

Path

New Lanark
 Woodlands

Footpath to
 Lanark

Contact Us



01555 661 345



www.newlanark.org



heritage@newlanark.org



[@NewLanark](https://www.instagram.com/NewLanark)



New Lanark World
Heritage Site, South
Lanarkshire, ML11 9DB



[Facebook.com/NewLanark](https://www.facebook.com/NewLanark)



[@NewLanarkWHS](https://twitter.com/NewLanarkWHS)

We love to see
photos from your
visits - please tag
us on social
media!

